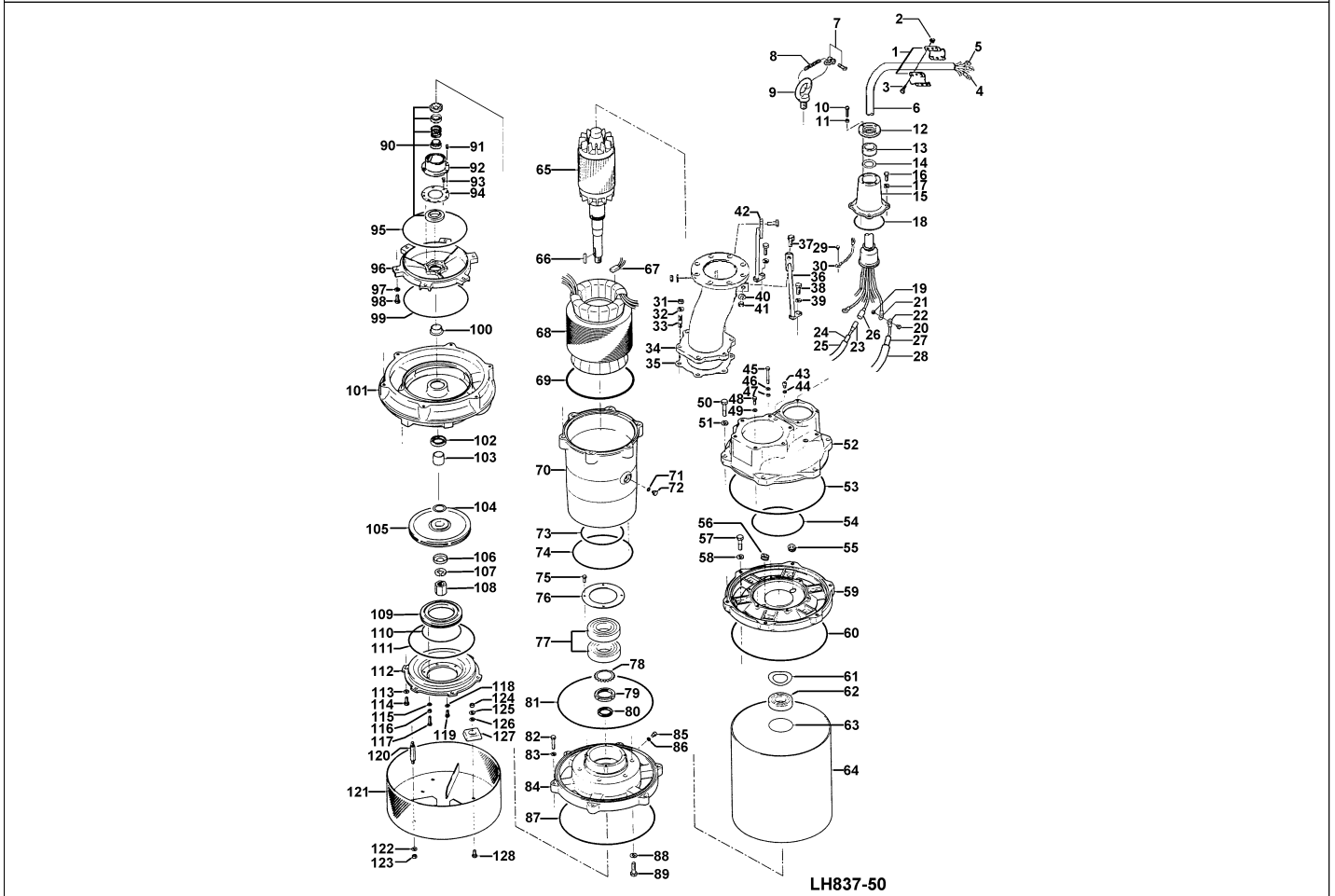


LH837-50

Kontroll-Nr. --

2020-01-1C V.01.02.2019

Pos.no	Item no.	Description	Quant.	UP
--------	----------	-------------	--------	----



Pos.no	Item no.	Description	Quant.	UP
		LH837-50		
1	173-511-11	Packing & O-Ring Set	1	
2	010-000-36	Cable Clip (N)SSHOU-J SS	1	
3	141-005-18	Hex.Nut M8 SUS304 (EN X5CrNi18-10)	4	
4	140-055-10	Hex.Bolt M8x25 SUS304	4	
5	009-113-17	Terminal R-38-10 CU	7	
6	009-116-10	Terminal R-2-4 CU	2	
7	M01-TEG-40(N)	Cabletyre Cable Set (20m) (N)SSHÖU 7x35+1x (3x2.5ST) LH37-75KW	1	
8	011-101-19	Shackle 6mm SS	1	
9	095-100-18	Chain d5(9-Link) SS	1	
10	072-108-44	Eye Bolt M30 SS	2	
11	140-081-31	Hex.Bolt M10x50 SUS304 (EN X5CrNi18-10) Stainless Steel	4	
12	141-006-19	Hex.Nut M10 SUS304 (EN X5CrNi18-10)	4	
13	003-000-41	Gland No.8 (N)SSHOU FC	1	
14	004-000-41	Cable Bush 85X50X60L NBR	1	
15	005-000-21	Busch Washer 84,5x51x3,2t	1	
16	006-000-51	Stuffing Box No.8 (N)SSHO FC	1	
17	140-078-19	Hex.Bolt M10x30 SUS304	4	
18	142-164-19	Spring Washer M10 SUS304	4	
19	122-135-19	O-Ring G-120(119.4xd3.1) NBR	1	
20	141-004-59	Hex.Nut M6 SWRM	7	
21	140-029-28	Hex.Bolt M6x10 SWRM	7	Price on req.
22	009-108-19	Terminal R-38-6 CU	7	
23	009-107-18	Terminal R-14-6 CU	6	
24	009-115-19	Connector PC-4020F	2	
25	002-128-14	Heat Shrink Tube (Sold per meter) EVA(d10x1t) (Vm)	1	
26	002-164-12	Heat Shrink Tube (Sold per meter)A4(d13x0.3t)(JPY /m)	1	
27	009-114-18	Connector PC-4020M	2	
28	002-000-18	Heat Shrink Tube (Sold per meter) W3F2(3/4IN) (Vm)	1	Price on req.
29	200-000-23	Electrical tape(30M) 540S(0.18T-30Wx30M)	1	Price on req.
30	143-000-58	Pan Screw (w/Spring Washer/Plain Washer) M6x12 SWRM	1	
31	009-106-17	Terminal(EUR.NSU) R-8-6 CU	2	
32	141-008-11	Hex.Nut M16 SUS304 (EN X5CrNi18-10)	6	
33	142-166-11	Spring Washer M16 SUS304	6	
34	144-436-24	Stud Bolt M16x69(28/24) SUS304 (EN X5CrNi18-10) Stainless Steel	6	
35	037-362-23	Discharge Pipe LH837/875 SGP+SS	1	
36	121-500-16	Packing LH637/875 THREE SHEET	1	
37	127-259-15	Stav (Right) LH837/845 (Right) SS	1	
38	140-126-13	Hex.Bolt M16x50 SUS304 (EN X5CrNi18-10) Stainless Steel	2	
39	140-124-11	Hex.Bolt M16x40 SUS304 (EN X5Cr18-10)	2	
	142-166-11	Spring Washer M16 SUS304	2	

LH837-50

Kontroll-Nr. --

2020-01-1C V.01.02.2019

Pos.no	Item no.	Description	Quant.	UP
40	142-166-11	Spring Washer M16 SUS304	2	
41	141-008-11	Hex.Nut M16 SUS304 (EN X5CrNi18-10)	2	
42	127-260-19	Stay (Left) LH837/845 (Left) SS	1	
43	035-113-18	Oil Plug M12x14 SUS304	1	
44	121-247-12	Packing d12.3xd18x2t PE	1	
45	140-093-10	Hex.Bolt M10x120 SUS304 (EN X5CrNi18-10) Stainless Steel	2	
46	142-164-19	Spring Washer M10 SUS304	3	
47	142-297-12	Seal Washer SM-10 Stainless Steel+NBR	2	
48	140-078-19	Hex.Bolt M10x30 SUS304	1	
49	142-164-19	Spring Washer M10 SUS304	3	
50	140-130-10	Hex.Bolt M16x70 SUS304 (EN X5Cr18-10)	6	
51	142-166-11	Spring Washer M16 SUS304	6	
52	051-231-13	Motor Head Cover FC	1	
53	122-503-12	O-Ring 435xd6 NBR	1	
54	122-344-13	O-Ring 234.3xd5.7 NBR	1	
55	016-114-10	Lead Wire Protection Bush For GH-637/837 Type(for 5 cores) SBR	1	
56	016-113-19	Lead Wire Protection Bush GH-422/430 Type(for 3 cores) SBR	1	
57	140-128-15	Hex.Bolt M16x60 SUS304	6	
58	142-166-11	Spring Washer M16 SUS304	6	
59	050-340-13	Motor Bracket FC	1	
60	122-305-12	O-Ring 442xd6 NBR	1	
61	142-280-12	Wave Washer #6310 SK-5	1	
62	052-113-11	Bearing 6310ZZC3	1	
63	122-133-17	O-Ring G-110 NBR	1	
64	065-191-13	Outer Cover GH-37/45KW SS	1	
65	055-720-16	Rotor	1	
66	147-056-12	Impeller Key 10x8x50l Stainless Steel	1	
67	053-309-19	Motor Protector 9700K-46-215 (H)	3	
68	056-001-99	Stator	1	Price on req.
69	122-107-12	O-Ring P-315 NBR	1	
70	064-391-12	Motor Frame FC	1	
71	122-259-10	O-Ring 12xd3 NBR	1	
72	144-490-13	Stator Set Bolt M12(B=21) SUS403	1	
73	122-151-11	O-Ring G-205 (NBR)	1	
74	122-159-19	O-Ring (Brg.Housing/O.Casing) G-280(279.3xd5.7) NBR	1	
75	140-054-48	Hex.Bolt M8x20 SWRM	4	
76	062-178-15	Bearing Fixing Plate SS	1	
77	052-145-12	Bearing 6314ZZD2C3	1	
78	142-247-17	Bearing Washer AW14 SPCC	1	
79	141-079-13	Bearing Nut AN14 SS	1	
80	026-272-18	Oil Seal SC-50689 NBR	1	
81	122-305-12	O-Ring 442xd6 NBR	2	
82	140-103-14	Hex.Bolt M12x60 SUS304 (EN X5CrNi18-10) Stainless Steel	6	
83	142-165-10	Spring Washer M12 SUS304	6	
84	060-417-13	Bearing Housing FC	1	
85	035-113-18	Oil Plug M12x14 SUS304	2	
86	121-247-12	Packing d12.3xd18x2t PE	2	
87	122-305-12	O-Ring 442xd6 NBR	2	
88	142-166-11	Spring Washer M16 SUS304	6	
89	140-127-14	Hex.Bolt M16x55 SUS304 (EN X5CrNi18-10) Stainless Steel	6	
90	025-001-24	Mechanical Seal HT-4550N SIC	1	
91	143-070-23	Pan Screw M5x6 SWRM	2	
92	030-136-12	Oil Lifter HT-4550 Resin	1	
93	143-070-10	Pan Screw M5x6 SWRM	6	
94	030-145-14	Seal Stopper HT-4550 SPCC	1	
95	122-282-12	O-Ring 295xd4 NBR	1	
96	029-346-13	Oil Casing LH-37/45KW FC	1	
97	142-165-10	Spring Washer M12 SUS304	6	
98	140-097-14	Hex.Bolt M12x30 SUS304	6	
99	122-282-12	O-Ring 295xd4 NBR	1	
100	071-119-16	Shaft Sleeve GH-370H/L SUS403 (EN X6Cr13) Stainless Steel	1	
101	020-A83-12	Pump Casing LH837/845(w/Labyrinth Ring) FC	1	
	026-148-27	Labyrinth Ring LH637/845 SUS304 (EN X5CrNi18-10) Stainless Steel	1	
102	026-130-13	Oil Seal TCN-487012 NBR	1	
103	071-121-11	Shaft Sleeve GH-370H/L SUS403 (EN X6Cr13) Stainless Steel	1	
104	040-126-10	Impeller Shim d41.5xd59x0.3t SUS304 (EN X5CrNi18-10) Stainless Steel	1	
105	021-457-30	Impeller (50HZ) 50Hz HiCrFC	1	
106	047-107-29	Impeller Thread Protect.Cover No.6(33) SUS304 (EN X5CrNi18-10) Stainless Steel	1	
107	142-171-19	Spring Washer M30 SUS304	1	
108	157-022-10	Impeller Nut M30.P3.5(B=46,Hex.Cap Nut) SUS304 (EN X5CrNi18-10) Stainless Steel	1	
109	033-124-16	Suction Mouth Ring GH-837 HiCrFC+FC	1	
110	122-246-14	O-Ring (Brg.Housing/O.Casing) 180xd3.1 NBR	1	
111	122-306-13	O-Ring 305xd5 NBR	1	
112	022-587-17	Suction Cover GH-637 FC	1	
113	142-165-10	Spring Washer M12 SUS304	6	
114	140-097-14	Hex.Bolt M12x30 SUS304	6	
115	142-163-18	Spring Washer M8 SUS304	3	
116	141-005-18	Hex.Nut M8 SUS304 (EN X5CrNi18-10)	3	
117	140-058-42	Hex.Bolt M8x40 SUS304 (EN X5CrNi18-10) Stainless Steel	3	
118	141-005-18	Hex.Nut M8 SUS304 (EN X5CrNi18-10)	3	
119	140-055-10	Hex.Bolt M8x25 SUS304	3	
120	144-123-12	Stud Bolt M12x120(20/20) SWRM	3	
121	023-230-15	Strainer Stand GH-370/450L SS	1	

LH837-50

Kontroll-Nr. --

2020-01-1C V.01.02.2019

Pos.no	Item no.	Description	Quant.	UP
122	142-165-10	Spring Washer M12 SUS304	3	
123	141-007-10	Hex.Nut M12 SUS304	3	
124	141-007-10	Hex.Nut M12 SUS304	3	
125	142-129-12	Plain Washer M12 SUS304	3	
126	142-165-10	Spring Washer M12 SUS304	3	
127	043-102-19	Cathodic Protection Plate AB-1HS(75x70x20t) Al	3	
128	140-096-13	Hex.Bolt M12x25 SUS304	3	
	173-511-11	Packing & O-Ring Set	1	
	##oilVG32	ml Turbine Oil ISO VG32	4800	Price on req.
	183-011-17	Impeller Puller A No.6 2" FC	1	