

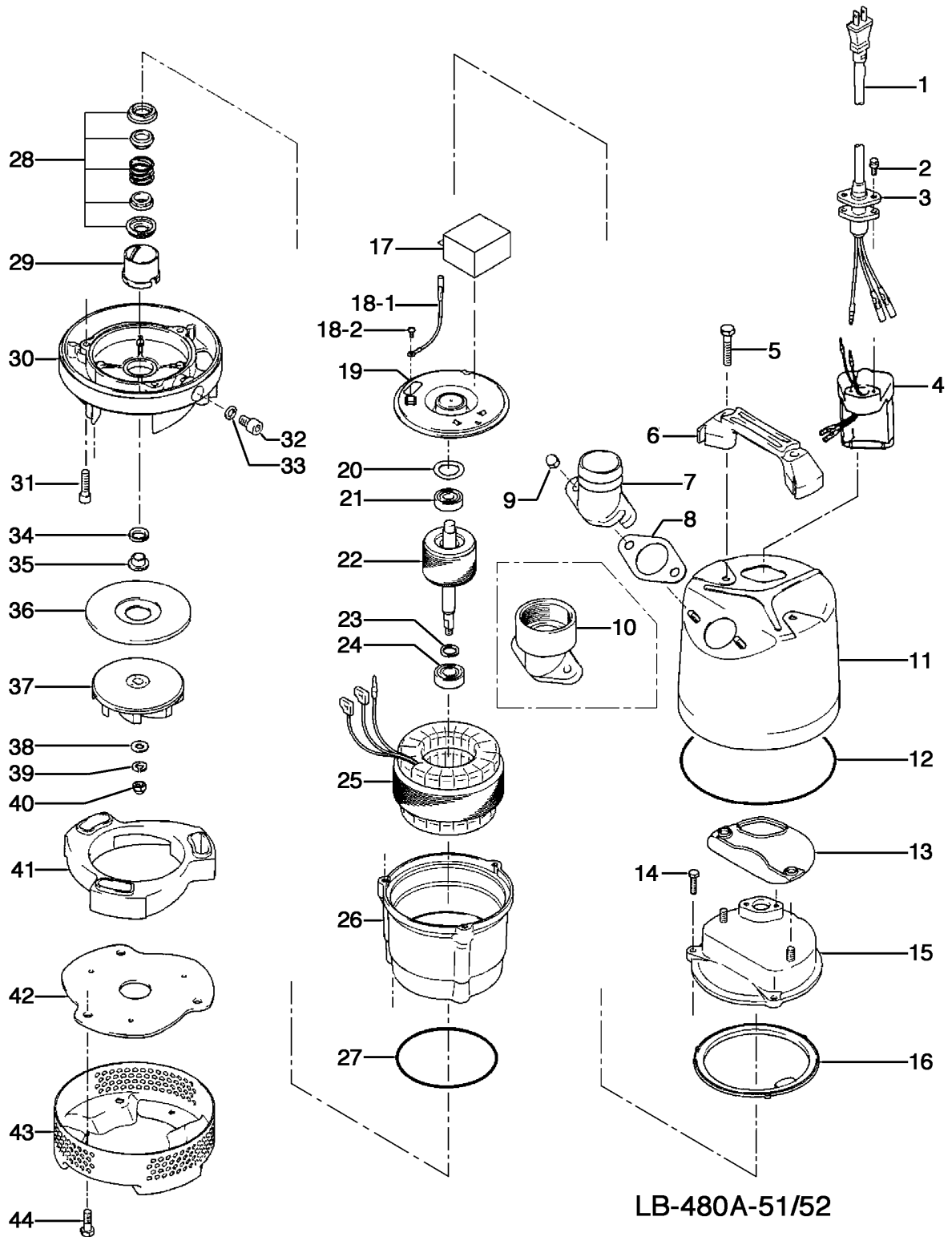
LB-480A-51/52

Kontroll-Nr. --

2016-01-31 V.18 / 1.10.2015

| LB-480A-51/52 | | | |
|---------------|------------|---|--------|
| Item | Item no. | Description | Quant. |
| 1 | 001-007-44 | Cable Set (10m) 220/230/240V-50HZ(EUR) H07R-F3Cx1mm2 LBD(HAR) | 1 |
| 2 | 140-427-17 | Hex.Bolt (w/Plain Washer) M5x15 SUS304 (EN X5CrNi18-10) | 2 |
| 3 | 003-190-10 | Gland SUS316 (EN X5Cr-Ni-Mb17-12-2) | 1 |
| 4 | 114-000-94 | Relay Unit EL-2 Type(200V) | 1 |
| 5 | 140-505-10 | Hex.Bolt (w/Plain Washer) M5x5 SUS304 (EN X5CrNi18-10) Stainless Steel | 2 |
| 6 | 068-289-18 | Handle LBA3-250/480 (SPC+NBR) | 1 |
| 7 | 032-000-12 | Hose Coupling 50mm(LB-480-52/62 Type) ADC | 1 |
| 7 | 032-000-23 | Hose Coupling (for EUR) BSPT-2, LB-480 ADC | 1 |
| 8 | 121-587-17 | Packing LB-250/480-51/61 NBR | 1 |
| 9 | 141-144-10 | Flanged Hex. Nut M8 SUS304 (EN X5CrNi18-10) Stainless Steel | 2 |
| 10 | 032-000-23 | Hose Coupling (for EUR) BSPT-2, LB-480 ADC | 1 |
| 10 | 032-000-70 | Screwed Flange 40mm inside thread 40mm(LB-480-51/61) | 1 |
| 11 | 065-382-13 | Outer Cover LB-250/480-51/61 Type SPC | 1 |
| 12 | 122-453-16 | O-Ring 172x2.7 NBR | 1 |
| 13 | 121-434-18 | Packing LB3-250/480 Synthetic Rubber | 1 |
| 14 | 140-396-16 | Hex.Bolt (w/Plain Washer) M6x20 SUS304 (EN X5CrNi18-10) Stainless Steel | 3 |
| 15 | 051-282-19 | Head Cover ADC | 1 |
| 16 | 121-546-14 | Packing d120xd142x6.2t NBR | 1 |
| 17 | 076-161-18 | Capacitor 220/230/240V-50HZ SH-CAP.580VAC-8MF(3Terminal) | 1 |
| 18-1 | 009-000-02 | Earth Terminal | 1 |
| 18-2 | 143-203-14 | Pan Screw M4x5 | 1 |
| 19 | 050-486-12 | Motor Bracket SECD | 1 |
| 20 | 142-451-16 | Wave Washer 6201(D=32,t=0.25) SUP | 2 |
| 21 | 052-100-15 | Bearing 6201ZZC3 | 1 |
| 22 | 055-889-14 | Rotor (HS2.4S-51/52, LSC1.4S-51, LB-480-52) | 1 |
| 23 | 061-180-17 | Bearing Collar d15.1xd20x1.6t SS | 1 |
| 24 | 052-101-16 | Bearing 6202ZZC3 | 1 |
| 25 | 056-C70-19 | Stator 220/230/240V-50HZ | 1 |
| 26 | 064-508-14 | Motor Frame ADC | 1 |
| 27 | 122-133-17 | O-Ring G-110 NBR | 1 |
| 28 | 025-000-45 | Mechanical Seal W-14VCA SiC | 1 |
| 29 | 030-000-09 | Oil Lifter W-14VL Resin | 1 |
| 30 | 029-000-70 | Oil Casing LB-250/480-51/61 Type ADC | 1 |
| 31 | 140-252-19 | Hex.Socket Cap Bolt M6x20 SUS304 (EN X5CrNi18-10) | 3 |
| 32 | 035-124-12 | Oil Plug M10x15 SUS304 (EN X5CrNi18-10) | 1 |
| 33 | 121-246-11 | Packing (Oil Plug) d10.3xd16x2t PE | 1 |
| 34 | 122-441-11 | V-Ring VR-14 NBR | 1 |
| 35 | 071-292-14 | Shaft Sleeve LB3-250/480 SUS304 (EN X5CrNi18-10) Stainless Steel | 1 |
| 36 | 031-000-01 | Wear Ring LB-250/480-51/61 Type SPC+Rubber | 1 |
| 37 | 021-007-43 | Impeller 50Hz | 1 |
| 37 | 021-007-44 | Impeller (60Hz) 60Hz Urethane Rubber | 1 |
| 38 | 142-127-10 | Plain Washer M8 SUS304 (EN X5CrNi18-10) Stainless Steel | 1 |
| 39 | 142-163-21 | Spring Washer M8 SUS316 (DIN 1.4401) Stainless Steel | 1 |
| 40 | 141-030-12 | Hex.Cap Nut M8 SUS304 (EN X5CrNi18-10) Stainless Steel | 1 |
| 41 | 020-B89-19 | Pump Casing LB-250/480-51/61 Type Synthetic Rubber | 1 |
| 42 | 022-001-28 | Suction Cover LB-250/480-52/62 Type SPC+Rubber | 1 |
| 43 | 023-547-18 | Strainer Stand LB-250/480-51/61 SPC | 1 |
| 44 | 140-503-18 | Hex.Bolt (w/Plain Washer) M8x16 SUS304 (X5CrNi18-10) Stainless Steel | 3 |
| | 173-567-12 | Packing & O-Ring Set | 1 |
| | ##oilVG32 | ml Turbine Oil ISO VG32 | 150 |
| | 090-126-15 | Electrode Extension KTVE/KTZE | 1 |

Exploded View LB-480A-51/52



LB-480A-51/52