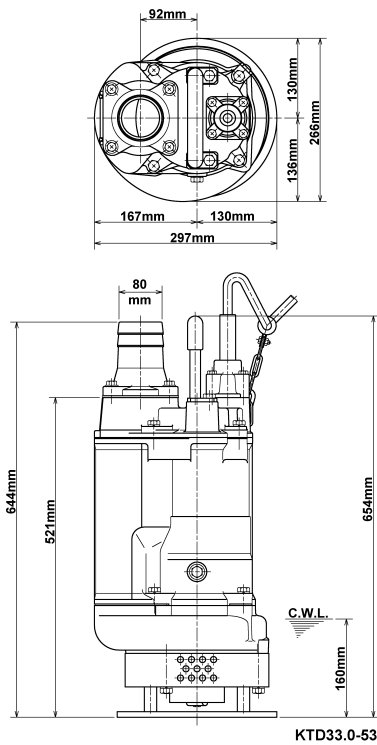
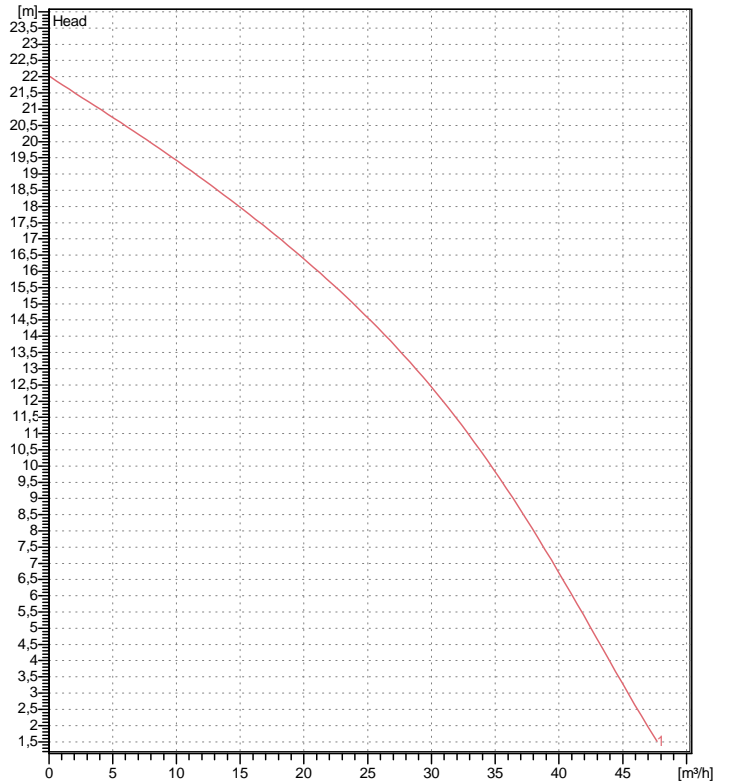


Data sheet KTD33.0-53



KTD33.0-53

CWL: Continuous running water level



Specification

Electric submersible pump
 Degree of protection IP 68
 Depth of submersion max. 25 m
 Type of impeller Semi-open
 Max. solid handling 10 mm
 Suitable for:
 spring-/rain-/waste-/ground water, water containing sand

Electric motor

Dry-type submersible induction motor
 Insulation class F 2Poles 2850 1/min
 Starting mode Directly
 Rated voltage 400 V 50 Hz 3~
 Power uptake 3,98 kW
 Rated power 3,00 kW
 Rated current 6,5 A
 Start current 58,0 A

Cable

20m NSSHÖU 4Cx1,5mm²

Motor Protection

Circle thermal protector
 (snap-action bi-metal device)

Shaft seal

Double inside mechanical seal in oil bath
 additional lubrication by oil lifting device
 Primary seal
 Silicon carbide on silicon carbide
 Secondary seal
 Silicon carbide on carbon

Bearings

Shielded ball bearings, maintenance-free

Materials

| | |
|---------------|-----------------------|
| Impeller | Chromium iron casting |
| Agitator | FCD700 (EN-GJS-700-2) |
| Pump casing | FC200 (EN-GJL-200) |
| Suction cover | FCD50 (EN-GJS-500-7) |
| Motor Frame | FC150 (EN-GJL-150) |
| Shaft | SUS420J2 (EN-X30Cr13) |

Discharge size

3" (80mm) BS-coupling (threaded flange)

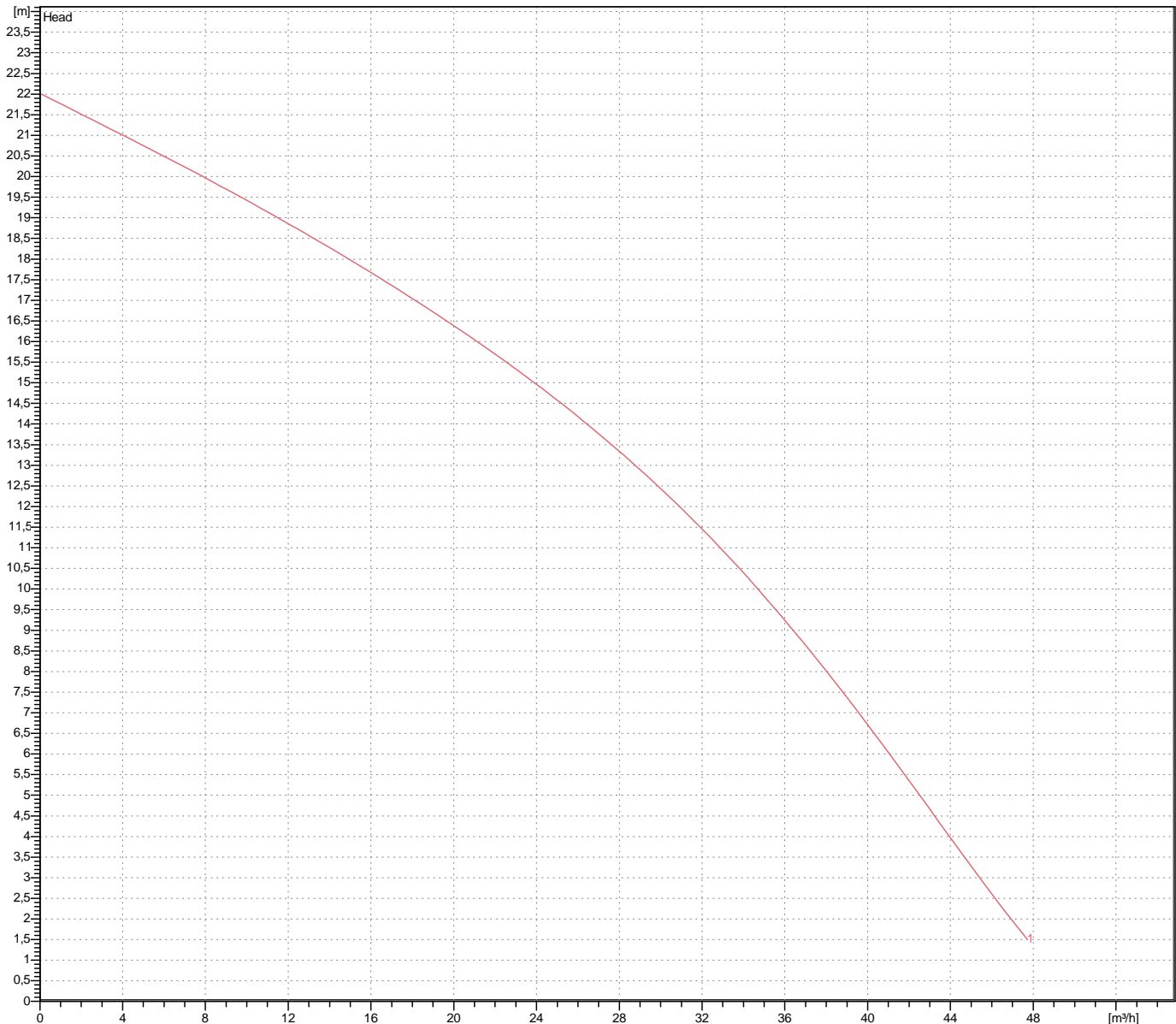
Weight

65 kg (dry weight of the pump only without cable)

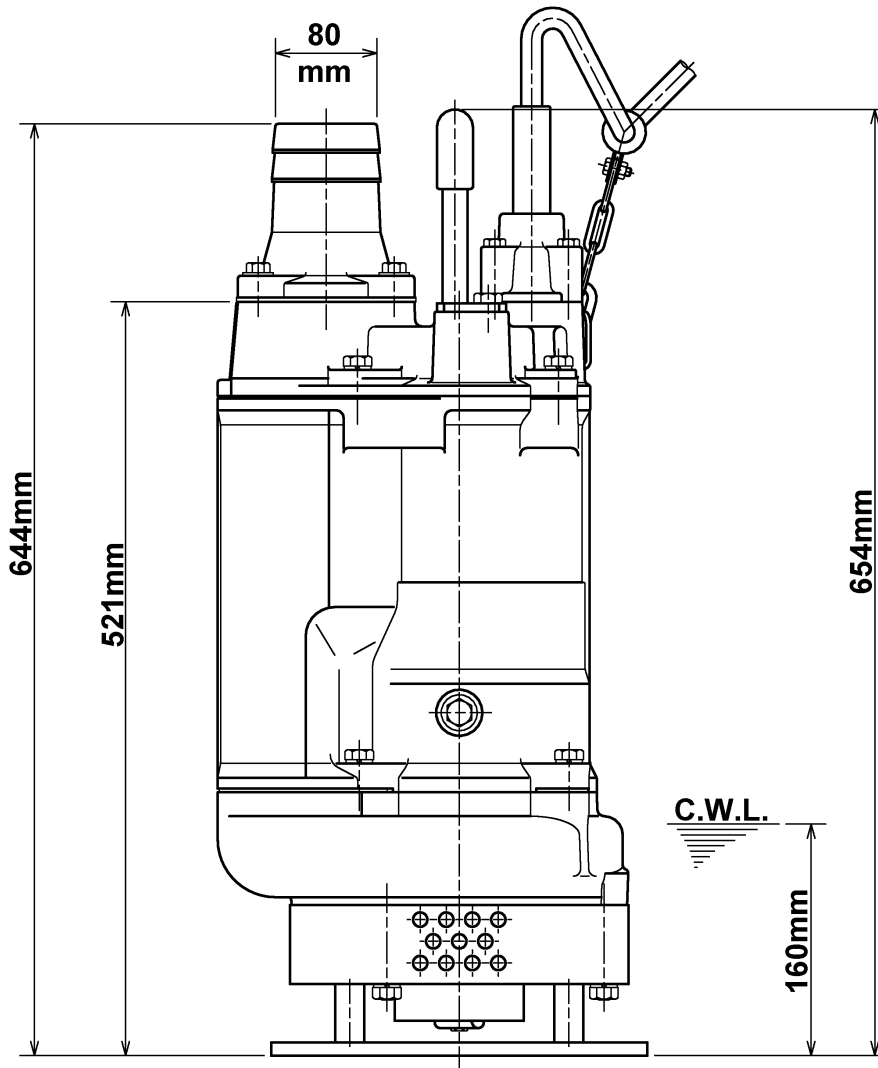
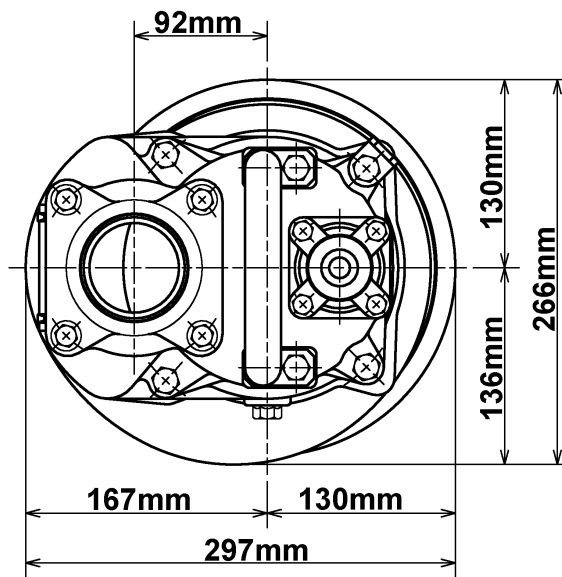
Performance curve

KTD33.0-53

| | |
|------------------|------------------------|
| Discharge port | 3" |
| Head | 22,0 m |
| Flow | 47,7 m ³ /h |
| Rated power | 3,00 kW |
| Power input | 3,98 kW |
| Phases | 3~ |
| Voltages | 400 V |
| Frequency | 50 Hz |
| Rated current | 6,5 A |
| Starting current | 57,98 A |
| Number of poles | 2 |
| Speed | 2850 1/min |
| Starting mode | Directly |
| Insulation class | F |



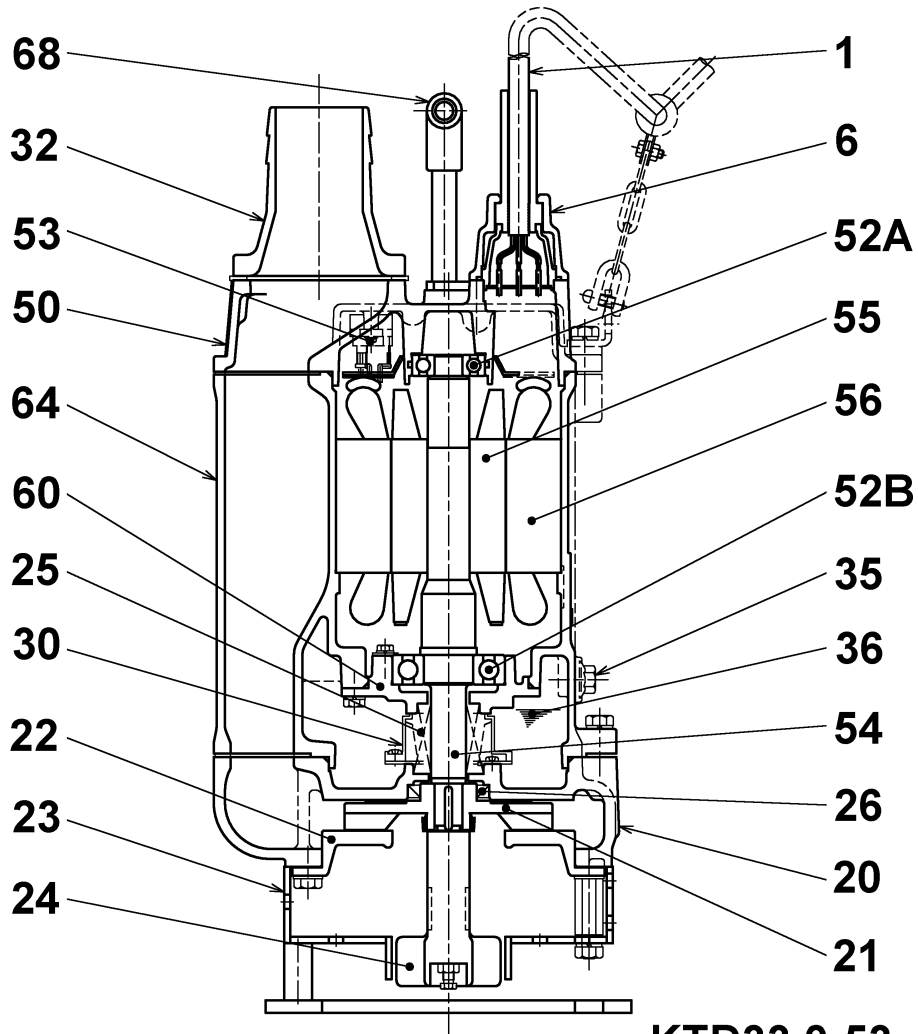
Dimensions KTD33.0-53



KTD33.0-53

CWL: Continuous running water level
LWL: Lowest running water level

Sectional drawing KTD33.0-53



KTD33.0-53

| No. | Description | Remark | No. | Description | Remark |
|-----|--------------------|-------------------------|-----|------------------------------|------------------------------|
| 1 | Cable | 20m NSSHÖU | 53 | Motor Protector 380/400/415V | 50Hz KA314-HRXL00 (H.C) |
| 6 | Stuffing box | FC200 (EN-GJL-200) | 54 | Shaft | SUS420J2 (EN-X30Cr13) |
| 20 | Pump casing | FC200 (EN-GJL-200) | 55 | Rotor | . |
| 21 | Impeller | Chromium iron casting | 56 | Stator | . |
| 22 | Suction cover | FCD50 (EN-GJS-500-7) | 60 | Bearing Housing | FC150 (EN-GJL-150) |
| 23 | Strainer | Steel plate | 64 | Motor Frame | FC150 (EN-GJL-150) |
| 25 | Mechanical seal | H-25T | 68 | Handle | steel pipe / Sectional steel |
| 24 | Agitator | FCD700 (EN-GJS-700-2) | | | |
| 26 | Oil seal | TC40588 | | | |
| 30 | Oil distributor | Plastic | | | |
| 32 | Discharge coupling | Aluminium alloy casting | | | |
| 35 | Oil screw | SUS304 (EN-X5CrNi18-10) | | | |
| 36 | Lubricant | Turbine oil (ISO VG32) | | | |
| 50 | Main cover | FC150 (EN-GJL-150) | | | |
| 52A | Upper bearing | 6304ZZC3 | | | |
| 52B | Lower bearing | 6307ZZC3 | | | |