

KRS1022-51

Kontroll-Nr. --

2016-01-29 V.18 / 1.10.2015

KRS1022-51			
Item	Item no.	Description	Quant.
1	011-102-10	Shackle 9mm SS	1
2	141-004-17	Hex.Nut 380/440/460V-60Hz M6 SUS304 (EN X5Cr18-10)	2
3	010-101-16	Cable Clip No.3 SPC	2
4	140-035-27	Hex.Bolt M6x20 SUS304 (EN X5CrNi18-10) Stainless Steel	2
5	001-TEG-24	Cabletyre Cable Set (20m) H07RN-F4Cx10mm ² with stuffing box	1
6	M01-TEG-24	Cabletyre Cable Set (20m) NSSHÖU 4Cx10mm ²	1
5	140-078-19	Hex.Bolt M10x35 SUS304 (EN X5CrNi18-10)	2
7	142-164-19	Spring Washer M10 SUS304 (EN X5CrNi18-10)	2
8	003-000-20	Gland 380/400/415V-50Hz SHD-150,KRS1022 FC	1
9	005-103-12	Bush Washer d29xd53.5x3.2t SPC	2
10	004-110-19	Cable Bush No.6 SBR	1
11	006-000-45	Stuffing Box KRS/SHD FC	1
12	122-135-19	O-Ring G-120 NBR	1
13	140-076-17	Hex.Bolt M10x30 SUS304 (EN X5Cr18-10)	4
14	142-164-19	Spring Washer M10 SUS304 (EN X5CrNi18-10)	4
15	143-041-12	Pan Screw M6x8 SWRM	1
16	009-107-18	Terminal R-14-6 CU	4
17	009-106-17	Terminal R-8-6 CU	3
18	140-029-28	Hex.Bolt M6x10 SWRM	3
19	141-004-59	Hex.Nut M6 SWRM	3
20	002-115-18	Heat Shrink Tube (Sold per meter) EVA(d16.5x1t) (Vm)	1
21	002-116-19	Heat Shrink Tube (Sold per meter) A4(d19x0.35t) (Vm)	1
22	140-153-35	Hex.Bolt M20x75 SUS304	6
23	142-168-13	Spring Washer M20 SUS304 (EN X5CrNi18-10) Stainless Steel	6
24	032-201-15	Hose Coupling 250mm FC	1
25	121-110-28	Packing JIS10 Kx250mm (NBR)	1
26	035-113-18	Oil Plug M12x14 SUS304 (EN X5Cr18-10)	1
27	121-247-12	Packing (Oil Plug) d12.3xd18x2t PE	1
28	072-100-20	Eye Bolt M10 SUS304 (EN X5Cr18-10)	1
29	050-001-09	Motor Bracket FC	1
30	140-128-15	Hex.Bolt M16x60 SUS304 (EN X5Cr18-10)	6
31	142-166-11	Spring Washer M16 SUS304 (EN X5Cr18-10)	6
32	122-158-18	O-Ring (Fixing Plate/MBacket) G-270(269.3xd5.7) NBR	1
33	142-000-83	Wave Washer 6308(d86.5xd74.5x6t) SK5	1
34	052-111-19	Bearing 6308ZZC3	1
35	143-032-10	Pan Screw M5x16 SWRM	2
36	142-112-25	Plain Washer M6 SPC	2
37	053-	Motor Protector	1
38	058-000-40	Lead Wire Protection Plate d95xd270x1t SPCC	1
39	016-000-04	Lead Wire Protection Bush d21xd52x11t SBR	2
40	055-002-81	Rotor	1
41	147-057-13	Impeller Key 12x8x50L SUS420	1
42	140-030-35	Hex.Bolt M6x12 SWRM	3
43	142-000-30	Spring Washer M6 SWRM	3
44	141-004-59	Hex.Nut M6 SWRM	3
45	009-107-18	Terminal R-14-6 CU	3
46	056-	Stator	1
47	122-000-55	O-Ring 450xd5.7 NBR	1
48	064-001-23	Motor Frame FC	1
49	122-000-56	O-Ring 455xd5.7 NBR	1
50	065-000-62	Outer Cover SS	1
51	122-000-56	O-Ring 455xd5.7 NBR	1
52	140-054-48	Hex.Bolt M6x20 SWRM	4
53	062-000-16	Bearing Fixing Plate 6312(d118xd170x4.5t) SS	1
54	052-143-10	Bearing 6312ZZD2C3	1
55	142-245-15	Bearing Washer AW12	1
56	141-077-11	Bearing Nut AN12 SS	1
57	026-111-18	Oil Seal TC-456812 NBR	1
58	122-158-18	O-Ring (Fixing Plate/MBacket) G-270(269.3xd5.7) NBR	1
59	060-001-75	Bearing Housing FC	1
60	142-165-10	Spring Washer M12 SUS304 (EN X5Cr18-10)	6
61	140-100-11	Hex.Bolt M12x45 SUS304 (EN X5Cr18-10)	6
62	035-102-30	Oil Plug M12x16(B=21) SUS304 (EN X5Cr18-10)	3
63	122-259-10	O-Ring (Oil Plug) 12xd3 NBR	3
64	122-312-12	O-Ring (P.Casing/Suction Plate) 430xd5.7 NBR	1
65	122-348-17	O-Ring 255xd5.7 NBR	1
66	020-535-14	Pump Casing KRS-10MFC	1
67	142-165-10	Spring Washer M12 SUS304 (EN X5Cr18-10)	6
68	140-099-16	Hex.Bolt M12x40 SUS304 (EN X5CrNi18-10)	6
69	025-000-62	Mechanical Seal HE-45A Type (SiC)	1
70	143-070-23	Pan Screw M5x6 SWRM	2
71	030-140-19	Oil Lifter For H-45 Resin	1
72	143-070-10	Pan Screw M5x6 SWRM	3
73	030-149-18	Seal Stopper For H-40/45 SPCC	1
74	122-330-16	O-Ring 155xd3.8 NBR	1
75	028-123-19	Seal Housing KRS-10MFC	1
76	140-268-18	Hex. Socket Cap Bolt M6x20 SUS304 (EN X5CrNi18-10) Stainless Steel	6
77	026-117-14	Oil Seal TC-709212 NBR	2
78	021-823-15	Impeller (50HZ) 50Hz FCD	1
79	142-134-23	Plain Washer M8 SPC	1
80	157-002-14	Impeller Nut M8,P3.5 SS	1
81	140-052-17	Hex.Bolt M8x16 SUS304 (EN X5Cr18-10)	1

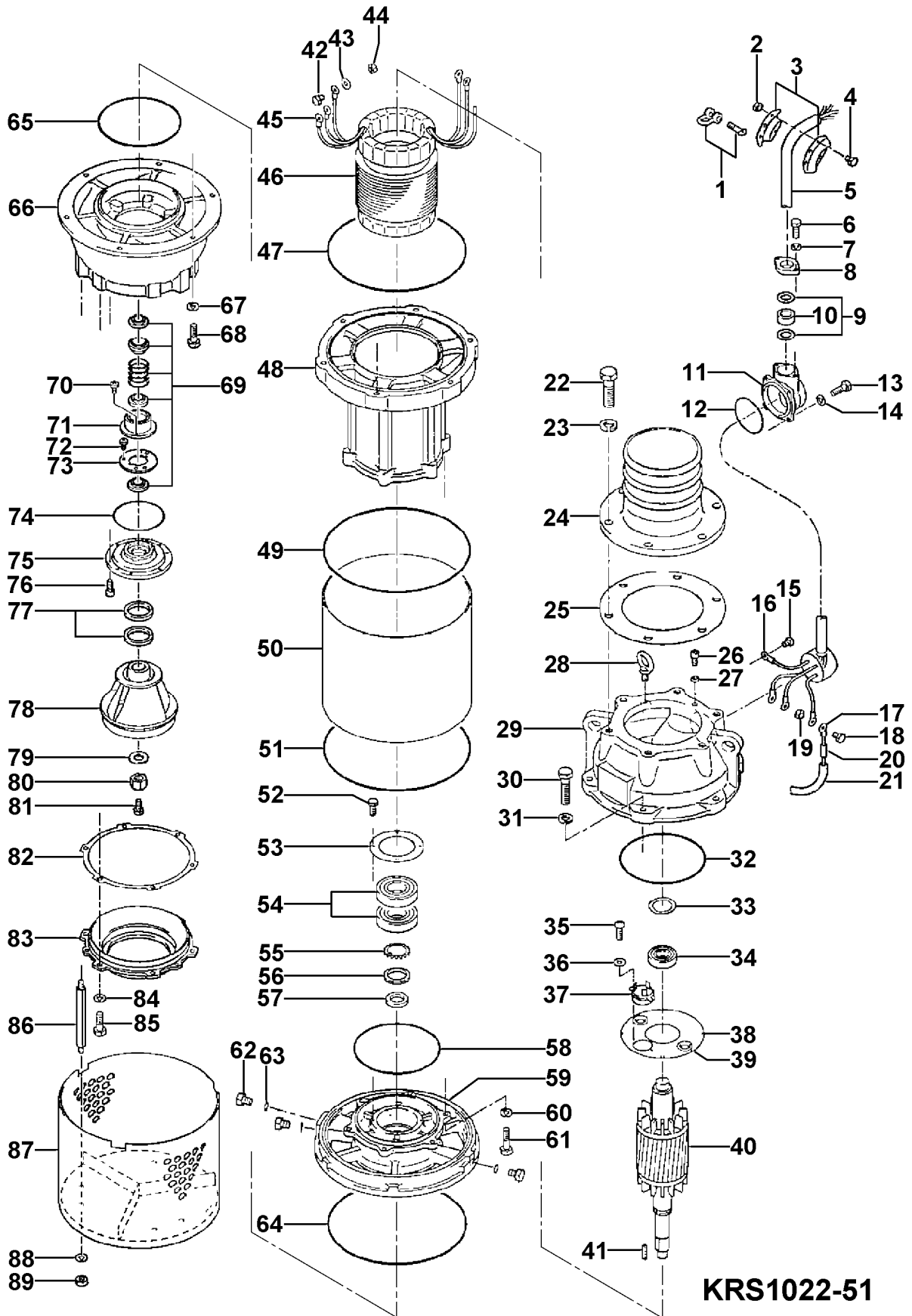
KRS1022-51

Kontroll-Nr. --

2016-01-29 V.18 / 1.10.2015

KRS1022-51			
Item	Item no.	Description	Quant.
82	120-103-12	Packing (S.Cover) d321xd356x0.5t PE	2
83	022-527-19	Suction Cover KRS-10MFC	1
84	142-165-10	Spring Washer M12 SUS304 (EN X5Cr18-10)	6
85	140-098-15	Hex.Bolt M12x35 SUS304 (EN X5Cr18-10)	6
86	144-127-29	Stud Bolt M12x207(20/20) SUS403 (EN X6Cr13) Stainless Steel	3
87	023-000-49	Strainer Stand KRS-10MSS	1
88	142-165-10	Spring Washer M12 SUS304 (EN X5Cr18-10)	3
89	141-007-10	Hex.Nut M12 SUS304 (EN X5CrNi18-10)	3
	173-003-18	Packing O-Ring Set	1
	##oilVG32	ml Turbine Oil ISO VG32	4000

Exploded View KRS1022-51



KRS1022-51